

COMMUNITY DESIGN

guidelines

Design review is an evaluation of the appearance of proposed buildings and structures as part of the subdivision and land development approval process, with its goal being the improvement of the aesthetic quality of the built environment. Design review should not limit architectural styles and expressions; quality design can take many forms.

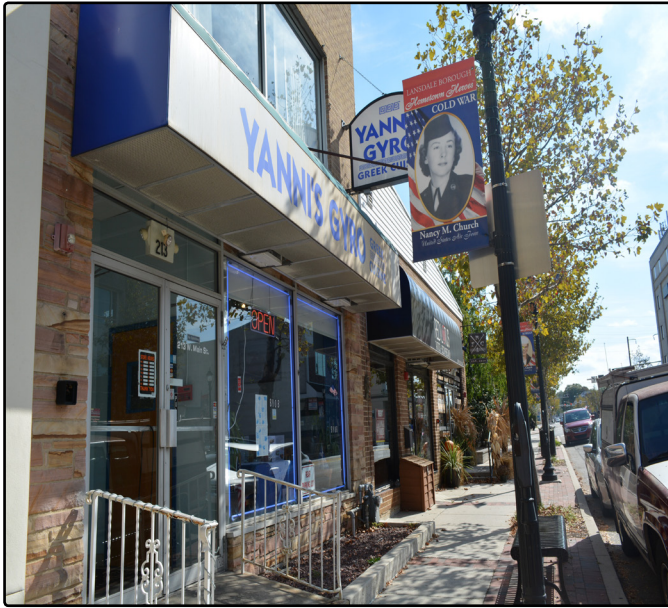
These illustrations assist anyone interested in partaking in the Lansdale Economic Development Committee's Facade Improvement Grant program by identifying appropriate design elements that will ensure consistency throughout the Lansdale community.



Creative signage includes icons which help make businesses unique in the eye of the consumer.



Lansdale's standards for lighting, street furniture and sidewalk paving shall be utilized.



Storefronts and awnings should be integrally designed as part of the entire facade.



Landscaping and fencing can be used to screen spaces between buildings.



Entrances to buildings should be architecturally defined and articulated.



The ground level should be integrally designed with upper floors of the building.